

# ICEYE

## Actionable flood intelligence — before, during, and after the waters rise

Benefit from a clear view of flood extent and depth across your entire portfolio before the first claim is filed





### Obtain a new level of situational awareness

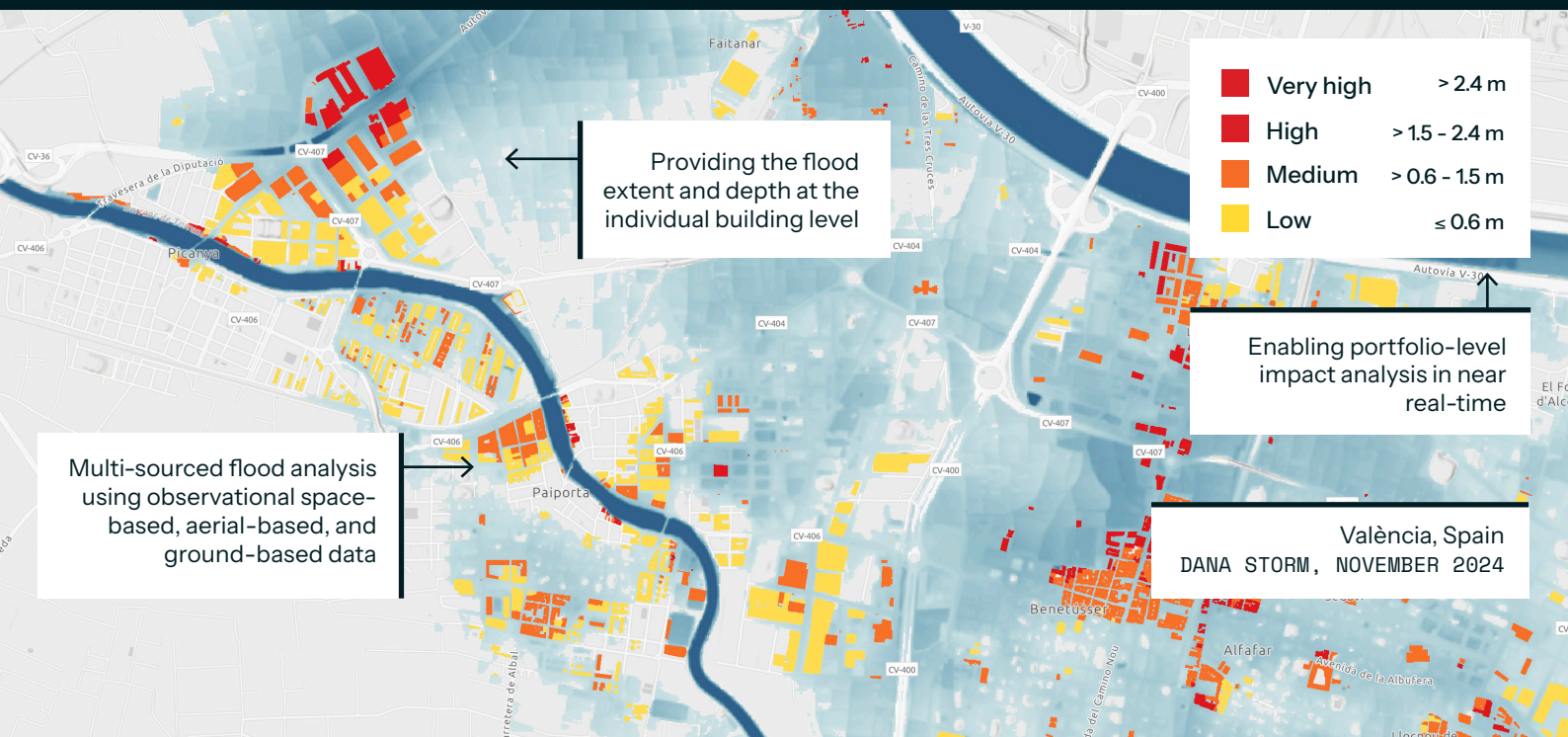
ICEYE generates near real-time flood intelligence by combining remote sensing satellite ground observations, third-party data sets, and machine learning. Unlike flood models that rely on static what-if scenarios, we use real observational data to deliver timely, accurate analyses worldwide. ICEYE's SAR (Synthetic Aperture Radar) sensors are central to this capability, detecting flooding day and night, in any weather condition.

Because our technology provides insight across the entire flood lifecycle, we help customers stay ahead of potential impacts. With detailed data layers and summary reports, we offer unmatched clarity and a concise view of the flood landscape to facilitate informed decision-making.

### Trusted by insurers and banks worldwide

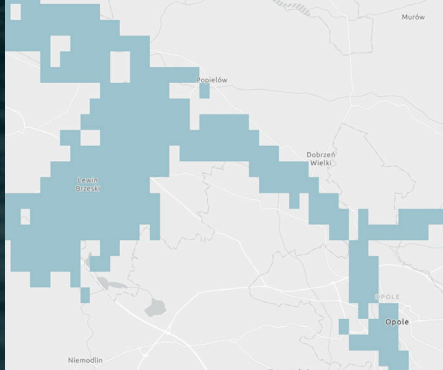
Operating the world's largest SAR satellite constellation with 40+ satellites, rapid tasking, and 4x (or more) daily re-visits, our natural disaster monitoring is always on. This allows us to deliver GIS-ready depth, extent, and impact data layers that banks, insurance companies, and public sector organizations can trust.

-  Global coverage of floods
-  Rolling updates every 6-12 hours
-  World's largest fleet of weather-independent radar satellites
-  Flexible data delivery through API integrations and GIS platforms

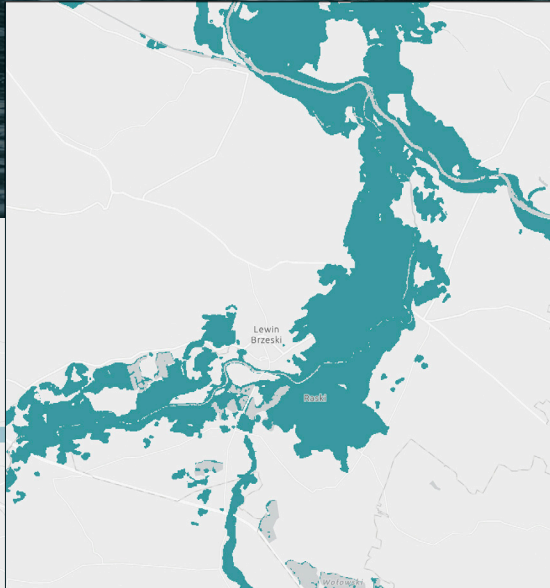


# ICEYE

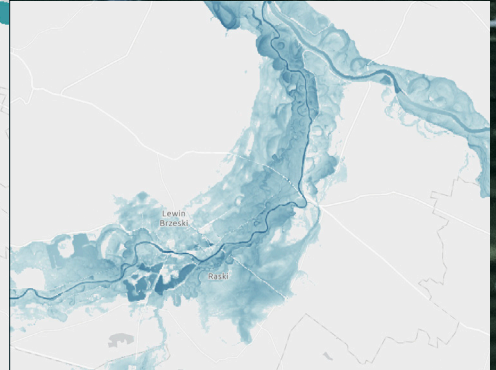
## Stay ahead of flood events and respond faster



BEFORE



DURING



AFTER

Prepare before the water arrives and prioritize resources in at-risk areas.

- Rolling 24-hour forecasts from ICEYE's proprietary flood forecast tool
- Continuous global monitoring by our meteorology team to initiate SAR satellite tasking when flood risk thresholds are met
- Ideal for rapid situational awareness, proactive resource positioning, and underwriting embargoes

Track water movement to support ongoing response efforts.

- Updated flood extent every 6 hours with SAR-based evidence
- See event evolution through regular updates
- Granular observation layers delivered via API or web-based applications
- Compatible data with GIS and exposure management platforms, as well as claims and underwriting systems

Replace legacy flood modeling with satellite-based insights to optimize your event response and quantify damage with confidence.

- Maximum extent and depth mapped at the building level
- Synthesizes SAR, terrain, gauge, and social data
- Actionable insights for triage, loss sizing, and early payouts
- Seamlessly integrated into claims and risk systems

## Your competitive edge with ICEYE

Transform your policyholder communication by shifting from a reactive process to a proactive approach

Accelerate claims processing and deploy field resources more efficiently

Support the validation of losses and provide early provisional payment to impacted customers

Underwrite and price more accurately in the context of flood risk/exposure, and further refine event underwriting rules

Learn how ICEYE helps you act faster, plan smarter, and respond better — across the full flood lifecycle.



→ [iceye.com/solutions/contact](https://iceye.com/solutions/contact)