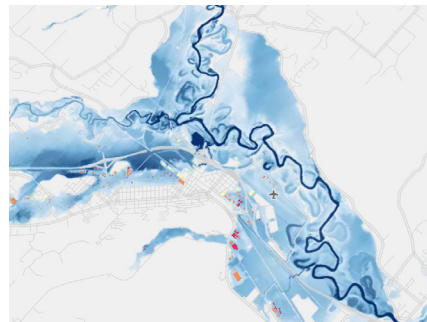
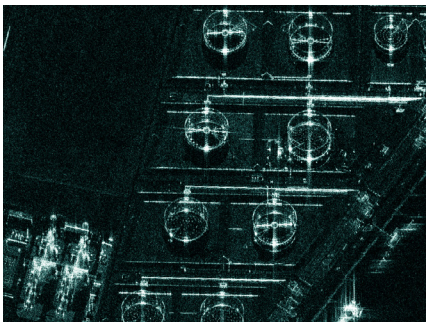


Your Choice for Persistent Monitoring

ICEYE

ICEYE (/ai'sai/) delivers unmatched persistent monitoring capabilities for any location on earth. Owning the world's largest synthetic-aperture radar (SAR) constellation, the company enables objective, data-driven decisions for its customers in sectors such as insurance, natural catastrophe response and recovery, security, maritime monitoring and finance. ICEYE's data can be collected day or night, and even through cloud cover, dust, smoke, and volcanic ash.

www.iceye.com



Problem Solving Across Industries with ICEYE SAR Satellite Data

The world's premier Persistent Monitoring data delivered from the world's largest SAR satellite constellation. ICEYE's radar satellite imaging service, designed to deliver very frequent coverage, both day and night, is used for change detection, monitoring patterns of life, and taking fast actions on quickly evolving situations.

Industry Use Cases

- Maritime Safety & Oil Spill Detection
- Defense & Intelligence and National SAR Missions
- Civil Government
- Infrastructure Monitoring
- Mining & Energy

ICEYE NatCat Monitoring: Actionable Intelligence on Natural Disasters

Within 24 hours of a flood peak, ICEYE's Flood Insights solution provides building-level flood extent and inundation measurements, while our Flood Early Warning product delivers pre-flood intelligence such as forecasted location, likelihood, and intensity. Our methodology combines SAR technology, machine learning, and auxiliary data sources and is utilized for other hazards as well, with a wildfire product currently in beta. ICEYE's high-resolution hazard data supports multiple critical tasks, including:

- Sizing the impact of events,
- Claims triage,
- More accurate damage and loss estimation,
- Faster assistance and relief with smarter resource allocation,
- Triggers for parametric offerings

Quick Facts

- Promise: The world's leading persistent monitoring capabilities with the largest SAR satellite constellation
- Number of satellites deployed: 34
- Patented technology: 5 granted patents, related to our satellite technology and software, as well as solutions and applications
- Weight: ~100 kg (~220 pounds)
- Orbit: Polar orbit (97.7 degr)
- Altitude: 560-580 km (348-360 miles)
- Speed: 16,780 mph or 7,5 km per second
- Time to complete one revolution of the Earth over the North pole and under the South pole: ~90 minutes
- First satellite launched: 2018
- Company HQ: Helsinki, Finland
- Total employees globally: 500+
- Total funds raised to date: \$304M in financing from multiple investors

Customer Highlights

We work with commercial and governmental customers worldwide.



بيانات
BAYANAT



Copernicus
Europe's eyes on Earth



esa

iqt IN-Q-TEL

Swiss Re

GP GLOBAL PARAMETRICS

BAE SYSTEMS

What are the Benefits of SAR?

Unlike optical imagery, this type of radar technology is ideally suited to persistently monitor huge areas on earth, capture millimeter-level changes, and assess potentially catastrophic situations in near real-time. From flood levels to the spread of wildfires and deforestation in the Amazon, ICEYE puts granular insights in the hands of public sector organizations and insurance companies in a format they can easily integrate, helping them make data-driven decisions in time-critical situations.

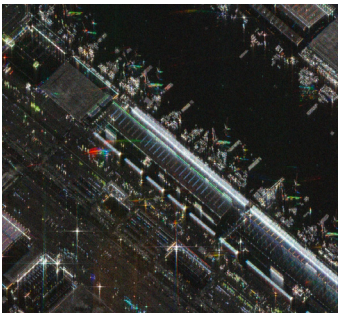


THROUGH
CLOUDS



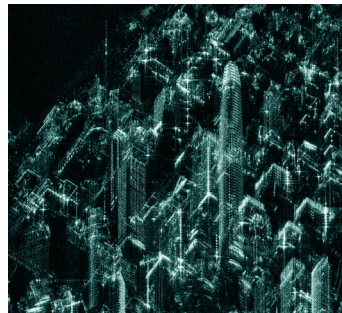
THROUGH
DARKNESS

SAR Data Products



Dwell for Detailed Views

- 5 x 5 km, 1 meter resolution, 25 sec collection time
- Extract unmatched critical information from a single image. See every detail in incredible clarity with enhanced image quality, superior information congestion and reduced noise.



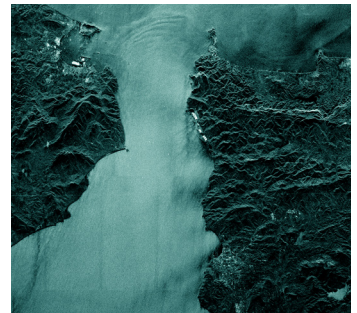
Spot, Spot Extended Area, Spot Fine for Detailed Views

- up to 15 x 15 km, up to 50 cm resolution
- Gain extensive insights with high resolution satellite imagery from a smaller area delivered up to multiple times per day.



Strip for Medium Area Coverage

- 30 x 50 km, 3-meter resolution
- Timely response to changes on the ground including natural disasters and activities requiring fast intervention, as well as border and coastal surveillance.



Scan for Wide Area Coverage

- 50,000 km², 15-meter resolution
- Reliable and timely information about extensive land and sea areas from a single SAR satellite image. Ideal for maritime safety.

Quick Contacts

- [ICEYE.com/contact](https://iceye.com/contact)
- [ICEYE.com/solutions](https://iceye.com/solutions)
- press@iceye.fi
- LinkedIn: @iceyefi



ICEYE Global Headquarters
Helsinki, Finland

CEO/Co-Founder: Rafal Modrzewski
CSO/Co-Founder: Pekka Laurila

ICEYE US Headquarters
Irvine, California

CEO, US: Eric Jensen

ICEYE